

EMBARGOED UNTIL 11.30 A.M. 16 JUNE 1992

**MOTOR VEHICLE CENSUS  
AUSTRALIA  
30 SEPTEMBER 1991**

**IAN CASTLES**  
Australian Statistician



© Commonwealth of Australia 1992



## CONTENTS

<i>Table</i>	<i>Page</i>
.. Summary of Findings	1
 <b>Tables for 30 September; 1976, 1979, 1982, 1985, 1988 and 1991—</b>	
1. Motor vehicles on register by type of vehicle: State/Territory of registration	6
2. Motor vehicles on register per 1,000 of population: State/Territory of registration	7
3. Plant and equipment, caravans and trailers on register: State/Territory of registration	8
 <b>Tables for 30 September 1991 —</b>	
4. Motor vehicles on register by year of manufacture and type of vehicle: State/Territory of registration	9
 <b>Vehicles on register by make of vehicle</b>	
5. Passenger vehicles on register by make of vehicle and year of manufacture: Australia	11
6. Passenger vehicles on register by make of vehicle: State/Territory of registration	11
7. Light commercial vehicles on register by make of vehicle and year of manufacture: Australia	12
8. Light commercial vehicles on register by make of vehicle: State/Territory of registration	12
9. Rigid trucks on register by make of vehicle and year of manufacture: Australia	13
10. Rigid trucks on register by make of vehicle: State/Territory of registration	13
11. Articulated trucks on register by make of vehicle and year of manufacture: Australia	14
12. Articulated trucks on register by make of vehicle: State/Territory of registration	14
13. Other trucks on register by make of vehicle and year of manufacture: Australia	15
14. Other trucks on register by make of vehicle: State/Territory of registration	15
15. Buses on register by make of vehicle and year of manufacture: Australia	16
16. Buses on register by make of vehicle: State/Territory of registration	16
17. Motor cycles on register by make of vehicle and year of manufacture: Australia	17
18. Motor cycles on register by make of vehicle: State/Territory of registration	17
 <b>Vehicles on register by make of vehicle and tare/GVM: Australia</b>	
19. Passenger vehicles on register by make of vehicle and tare: Australia	18
20. Light commercial vehicles on register by make of vehicle and tare: Australia	18
21. Rigid trucks on register by make of vehicle and gross vehicle mass: Australia	19
22. Articulated trucks on register by make of vehicle and gross vehicle mass: Australia	19
23. Buses on register by make of vehicle and tare: Australia	20
24. Motor vehicles on register by type of vehicle and fuel type: Australia	20
.. Explanatory Notes	21

---

### INQUIRIES

- for further information about statistics in this publication and the availability of related unpublished statistics, contact John Pratten on Canberra (06) 252 6772 or any ABS State office.
  - for information about other ABS statistics and services please refer to the back page of this publication.
-

## **ACKNOWLEDGEMENTS**

The statistics contained in this publication are based on data supplied to the ABS by respective State, Territory and Commonwealth motor vehicle registration authorities, to whom our thanks are extended.

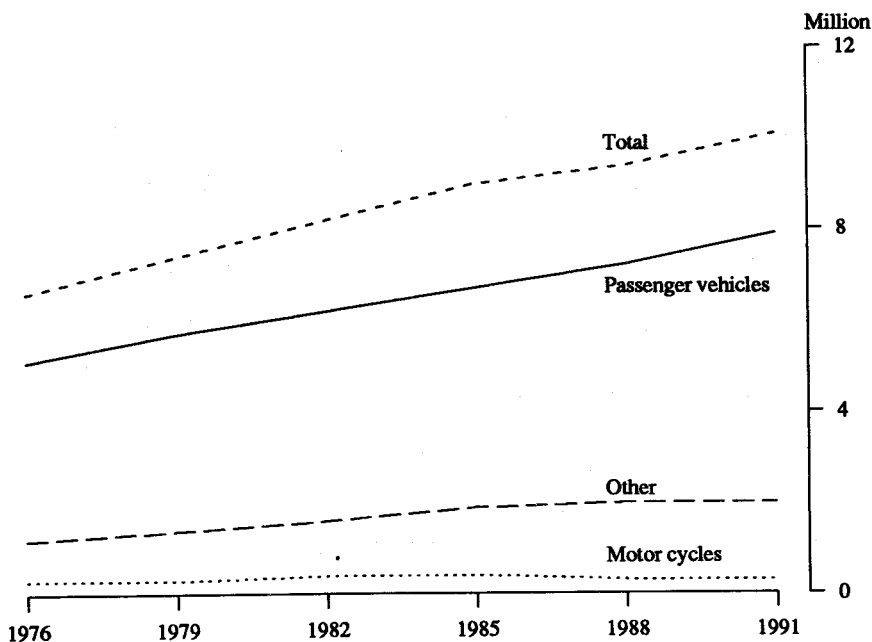
## SUMMARY OF FINDINGS

### Total Number of Vehicles

There were 10,098,918 motor vehicles (excluding plant and equipment, caravans and trailers) on register in Australia at 30 September 1991 representing a net increase of 680,911 vehicles (7.2%) in the 3 years since 30 September 1988, the date of the previous census.

Passenger vehicles on register increased by 9.7% (694,646) to 7,853,453 vehicles, while other vehicles increased only marginally by 0.3% (6,076). In contrast, motor cycle registrations declined by 6.5% (19,811) to 284,177. Since 1976 the number of motor cycles on register has fallen by 3.1% (9,177), while passenger vehicle registrations over the same period increased by 53.9% (2,751,204).

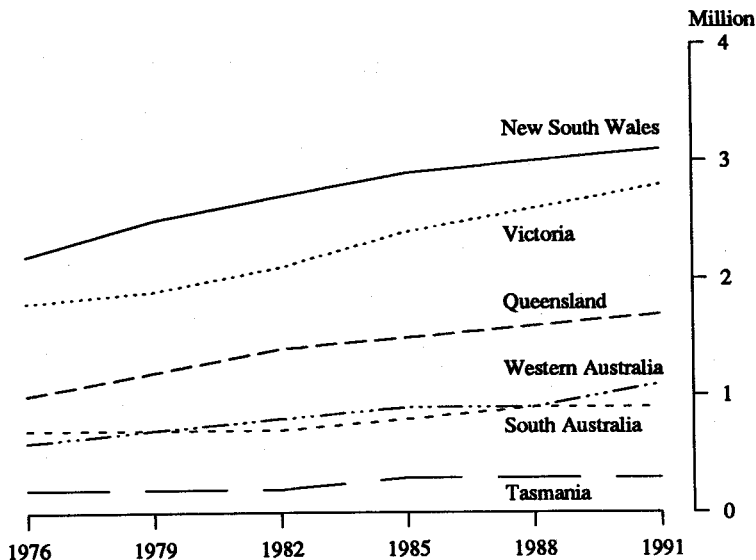
NUMBER OF VEHICLES ON REGISTER  
BY VEHICLE TYPE: 30 SEPTEMBER



### State of Registration

New South Wales and Victoria together accounted for 58.1% (5,863,286) of all vehicle registrations at 30 September 1991. Since 1988, Western Australian, Queensland and Victorian registrations have shown the largest relative increases of 13.2% (124,997), 8.1% (126,932) and 7.8% (200,348) respectively. In contrast, New South Wales registrations increased by 3.8% (113,294) over the same period.

NUMBER OF VEHICLES ON REGISTER  
BY STATE OF REGISTRATION  
30 SEPTEMBER



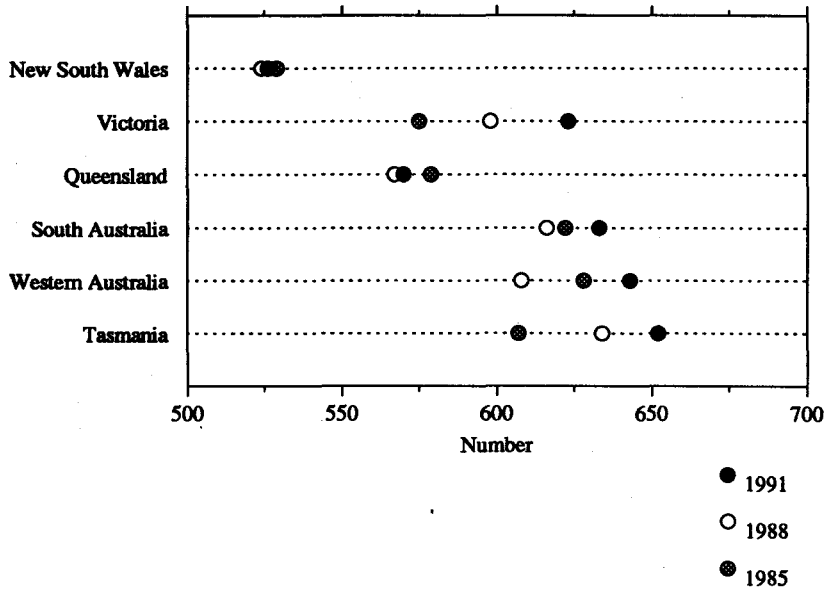
**Measured Against Population**

At 30 September 1991 there were 583 registrations per thousand of mean population in Australia, an increase of 16 registrations per thousand since 1988. Tasmania had the highest registrations per thousand at 652 followed by Western Australia with 643 and South Australia with 633. The lowest were New South Wales with 526 and Northern Territory with 531.

Since 1988 passenger vehicle numbers increased by 22 to 453 per thousand of population, while motor cycle registrations fell from 18 to 16 vehicles per thousand. Other vehicle types were down by 5 registrations per thousand.

New South Wales and Queensland recorded the lowest relative increases since 1988 in registrations per thousand of population with 0.4% (2) and 0.5% (3) respectively. In contrast, significant increases occurred in Victoria and Western Australia with 4.2% (25) and 5.8% (35) registrations per thousand of population.

**MOTOR VEHICLES ON REGISTER  
PER 1,000 OF POPULATION  
30 SEPTEMBER**

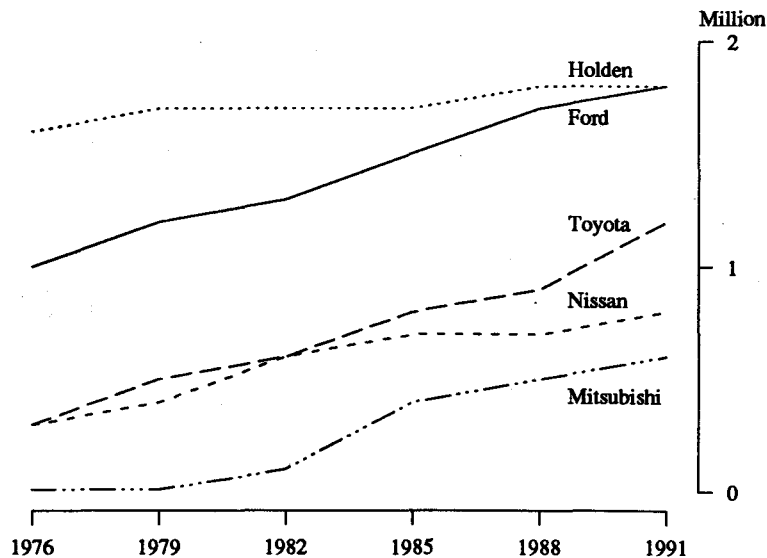


**Make of Vehicle**

The top five makes accounted for 77.7% (6,102,825) of total registered passenger vehicles at 30 September 1991. Ford made up the largest share with 1,817,075 registrations (23.1%), followed by Holden with 1,761,526 (22.4%), Toyota with 1,161,310 (14.8%), Nissan with 774,671 (9.9%) and Mitsubishi with 588,243 (7.5%).

Between 1988 and 1991, Toyota and Mitsubishi passenger vehicle registrations increased by 220,611 (23.5%) and 85,792 (17.1%) respectively. Ford and Nissan recorded increases of 136,863 (8.1%) and 48,484 (6.7%) respectively. In contrast, Holden registrations increased only marginally by 13,242 (0.8%).

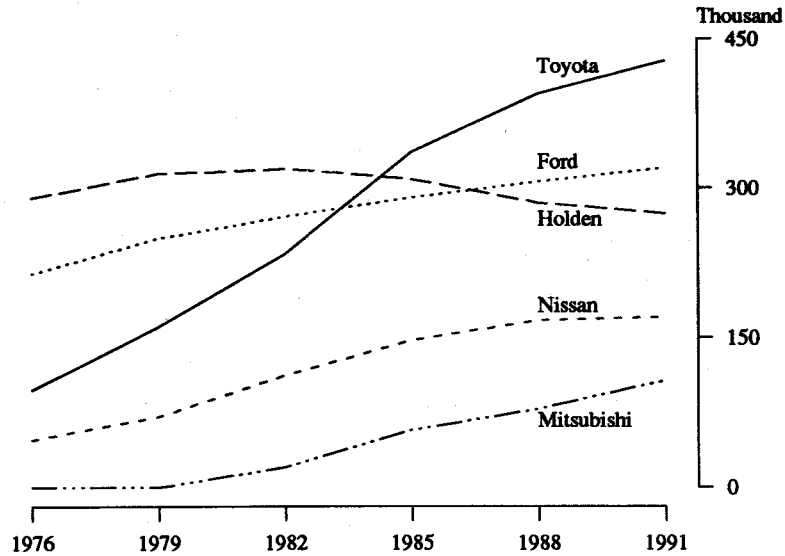
**NUMBER OF PASSENGER VEHICLES  
ON REGISTER BY TOP 5 MAKES FOR 1991  
30 SEPTEMBER**



Toyota had the largest number of load carrying commercial vehicles on register at 30 September 1991 with 427,585 (22.9%), followed by Ford with 320,996 (17.2%) and Holden with 274,191 (14.7%).

Between 1988 and 1991 Toyota and Mitsubishi load carrying commercial vehicle registrations increased by 32,796 (8.3%) and 29,281 (37.3%) respectively. Ford and Nissan recorded smaller increases of 14,224 (4.6%) and 3,271 (2.0%) respectively, while Holden's commercial registrations declined by 10,555 (3.7%).

**NUMBER OF LOAD CARRYING COMMERCIAL VEHICLES ON REGISTER  
BY TOP 5 MAKES FOR 1991  
30 SEPTEMBER**



Toyota accounted for 17,958 (35.5%) bus registrations at 30 September 1991 followed by Nissan with 4,599 (9.1%), Bedford with 3,851 (7.6%) and Mercedes Benz with 3,583 (7.1%).

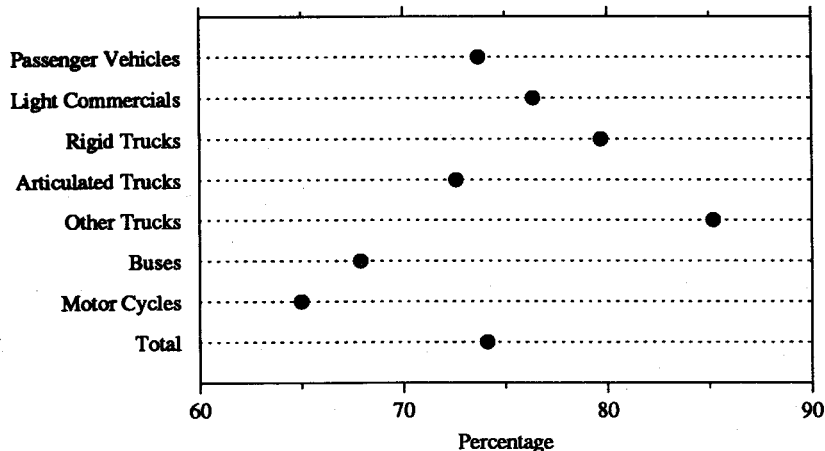
Honda (89,898), Yamaha (65,328), Suzuki (49,357) and Kawasaki (37,412) together accounted for 85.2% of motor cycle registrations. At 30 September 1988 these same makes accounted for 87.6% of all registered motor cycles.

**Vehicle Age**

At 30 September 1991 the average age of all vehicles on register was 9.8 years while for passenger vehicles the average age was 9.7 years. The corresponding average ages in 1988 were 9.1 years in each case.

There were 7,483,001 (74.1%) vehicles on register which were 5 or more years old. Of these 2,375,222 (23.5%) were 6 to 9 years old. Vehicles aged 5 years or more accounted for 73.7% (5,791,273) of the total number of passenger vehicles on register, 76.4% (1,130,186) of light commercial vehicles, 79.7% (265,450) of rigid trucks, 72.6% (37,026) of articulated trucks, 85.2% (39,991) of other trucks, 67.9% (34,293) of buses and 65.0% (184,782) of motor cycles.

**PROPORTION OF VEHICLES MANUFACTURED BEFORE 1987  
BY TYPE OF VEHICLE  
30 SEPTEMBER 1991**



**Fuel Type**

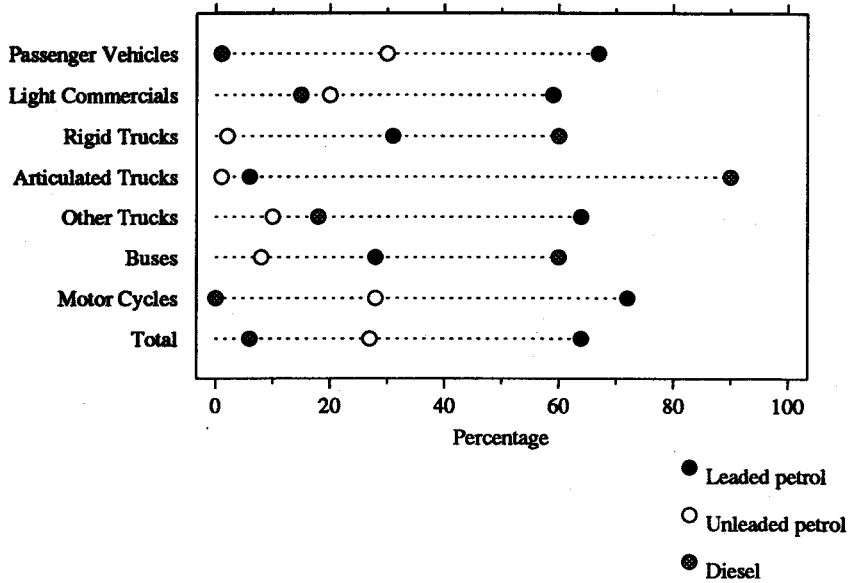
Nearly 92% (9,243,394) of all vehicles on register at 30 September 1991 were fueled by petrol, with 64.5% (6,509,004) using leaded and 27.1% (2,734,390) using unleaded petrol. Diesel fuel was used in 6.1% (613,097) of vehicles and Liquid Petroleum Gas (LPG) in 0.4% (40,834) of vehicles.

Of those vehicles with a fuel type recorded, petrol was used by 7,631,059 (98.3%) passenger vehicles, 1,162,371 (83.0%) light commercial vehicles, 109,641 (35.4%) rigid trucks, 3,488 (7.0%) articulated trucks, 18,135 (37.4%) buses and 283,966 (100.0%) motor cycles.

Diesel fuel was used by 46,015 (90.2%) articulated trucks, 198,228 (59.5%) rigid trucks and 228,540 (15.4%) light commercial vehicles.

Of the 40,834 vehicles using LPG, 29,087 (71.2%) were passenger vehicles.

**PROPORTION OF VEHICLES ON REGISTER  
BY FUEL TYPE  
30 SEPTEMBER 1991**

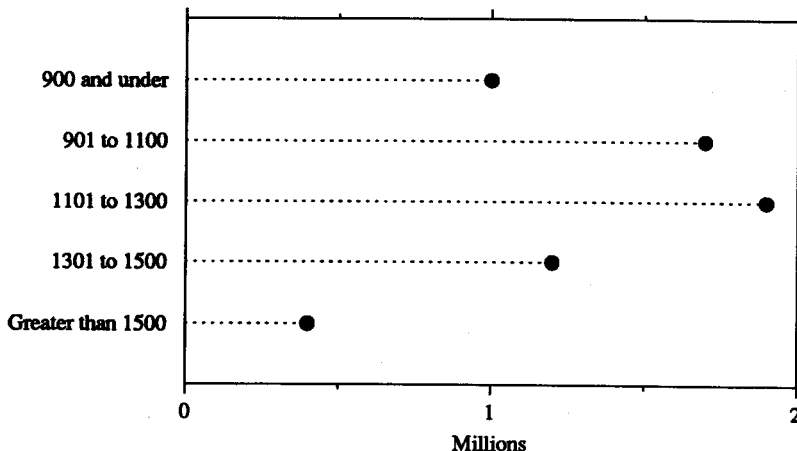


**Vehicle Tare Weight and Gross Vehicle Mass**

Refer to paragraph 13 and 14 (Page 21) in the Explanatory Notes for examples of vehicles in various Vehicle Tare Weight categories.

Of the passenger vehicles with a recorded tare weight, 16.1% (1,019,552) were under 901 kg, 57.6% (3,643,521) were between 901 and 1300 kg and 6.7% (424,034) were over 1500 kg. In contrast, 9.7% (124,237) of light commercial vehicles weighed less than 901 kg, 34.7% (442,833) fell between 901 and 1300 kg and 18.8% (240,355) were over 1500 kg.

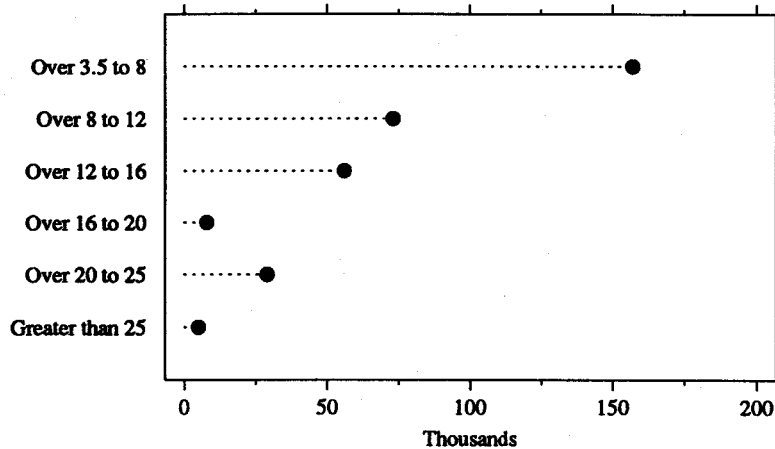
**PASSENGER VEHICLES ON REGISTER  
BY TARE WEIGHT  
30 SEPTEMBER 1991  
(Kilograms)**





For rigid trucks with a reported GVM, 87.3% (284,051) had a GVM of less than 16 tonnes with 47.8% (155,539) being less than 9 tonnes. Of the 41,452 (12.7%) of vehicles exceeding 16 tonnes, 29,177 were in the over 20 to 25 tonnes category and 4,429 were over 25 tonnes.

**RIGID TRUCKS ON REGISTER  
BY GROSS VEHICLE MASS  
30 SEPTEMBER 1991  
(Tonnes)**



For articulated trucks with a reported GVM, approximately 21% (8,887) had a GVM over 34 tonnes and around 51% (21,105) had a GVM of less than 25 tonnes. In the 18 and under tonne category 2,728 (21.0%) were manufactured by International and 1,572 (12.1%) by Mercedes Benz. In the over 40 tonne category the major makes were Macks with 1,035 (18.0%) and Kenworths with 1,016 (17.7%).

**ARTICULATED TRUCKS ON REGISTER  
BY GROSS VEHICLE MASS  
30 SEPTEMBER 1991  
(Tonnes)**

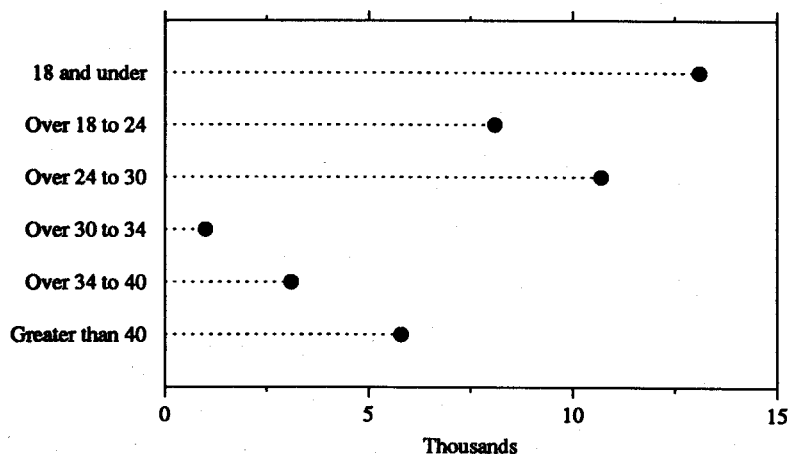


TABLE 1. MOTOR VEHICLES ON REGISTER BY TYPE OF VEHICLE: STATE/TERRITORY OF REGISTRATION,  
30 SEPTEMBER

Period	NSW	Vic.	Qld	SA	WA	Tas.	NT	ACT	Australia
<b>PASSENGER VEHICLES</b>									
1976	1,712,909	1,456,213	723,404	509,190	442,603	158,676	19,318	79,936	5,102,249
1979	1,906,556	1,554,401	855,016	543,789	521,084	175,074	24,383	89,275	5,669,578
1982(a)	2,070,380	1,700,727	1,005,324	580,434	561,341	188,124	34,480	92,603	6,233,413
1985	2,169,708	1,887,467	1,040,974	656,952	631,032	200,417	40,610	107,042	6,734,202
1988	2,258,708	2,042,794	1,131,135	681,505	679,111	210,991	(b)35,668	118,895	7,158,807
1991(c)(d)	2,484,897	2,196,991	1,246,795	730,658	779,984	223,576	52,553	137,999	7,853,453
<b>LIGHT COMMERCIAL VEHICLES</b>									
1976	239,779	151,518	171,508	61,002	89,789	25,325	9,985	9,276	758,182
1979	276,272	164,121	215,324	65,885	105,076	29,523	12,613	10,351	879,165
1982(a)	320,182	173,666	267,514	71,540	112,702	33,099	16,338	7,947	1,002,988
1985	(e)375,668	190,636	284,203	87,191	133,125	39,919	18,929	10,808	1,140,479
1988	389,950	196,003	297,685	90,027	136,730	43,169	18,249	11,676	1,183,489
1991(d)(f)	410,758	365,204	306,943	116,333	189,300	52,717	22,799	15,653	1,479,707
<b>RIGID TRUCKS</b>									
1976	115,726	117,764	43,752	36,277	43,775	10,368	2,026	2,515	372,203
1979	136,608	127,768	48,877	38,664	52,486	11,603	1,502	2,361	419,869
1982(a)	155,171	146,862	55,074	41,524	59,576	12,798	4,525	3,458	478,988
1985	165,476	181,026	56,746	48,049	67,573	16,057	5,339	3,456	543,722
1988	171,838	205,074	53,773	48,731	74,458	17,076	(b)1,705	3,684	576,339
1991(d)	105,559	84,448	57,169	29,615	40,813	11,120	2,236	2,125	333,085
<b>ARTICULATED TRUCKS</b>									
1976	13,105	9,766	5,896	5,155	3,431	1,169	293	135	38,950
1979	15,405	10,377	7,239	4,561	4,007	1,375	525	194	43,683
1982(a)	16,078	11,461	8,607	4,405	4,293	1,357	776	202	47,179
1985	16,727	12,442	8,574	5,077	4,881	1,471	896	152	50,220
1988	14,881	13,696	8,368	4,066	5,056	1,570	966	254	48,857
1991(d)	14,750	14,358	8,949	4,139	5,829	1,562	1,151	276	51,014
<b>OTHER TRUCK TYPES</b>									
1976	7,847	4,867	3,164	4,062	3,826	1,066	183	118	25,133
1979	10,210	9,833	3,432	4,969	5,488	1,992	108	295	36,327
1982(a)	11,920	11,444	4,450	5,739	5,975	1,662	209	620	42,019
1985	13,914	12,621	4,517	6,840	7,747	2,773	284	696	49,392
1988	14,218	13,445	5,354	7,409	8,724	3,202	295	719	53,366
1991(d)	10,462	11,234	5,886	6,213	8,673	3,247	189	1,043	46,947
<b>BUSES</b>									
1976	11,154	7,294	3,557	3,230	3,312	1,739	242	858	31,386
1979	13,019	8,995	4,881	3,586	4,253	1,969	246	807	37,756
1982(a)	15,918	11,359	7,261	3,583	4,890	2,091	554	534	46,190
1985	(e)43,171	13,283	10,245	3,605	6,235	1,710	746	1,094	80,089
1988	54,107	14,255	10,498	2,972	7,499	1,914	704	1,212	93,161
1991(d)	10,873	13,662	9,692	3,264	8,721	2,007	1,059	1,257	50,535
<b>MOTOR CYCLES</b>									
1976	95,459	51,931	72,767	31,750	28,469	6,493	2,739	3,746	293,354
1979	93,199	48,502	78,612	30,380	27,222	4,550	2,250	3,601	288,316
1982(a)	118,496	71,666	91,783	36,818	34,628	5,126	3,982	4,379	366,878
1985	115,819	78,790	74,093	40,981	36,959	6,354	4,324	4,305	361,625
1988	89,913	70,762	60,350	34,371	35,406	6,376	(b)3,064	3,746	303,988
1991	69,610	70,480	58,661	31,445	38,661	6,161	4,337	4,822	284,177
<b>TOTAL MOTOR VEHICLES</b>									
1976	2,195,979	1,799,353	1,024,048	650,666	615,205	204,836	34,786	96,584	6,621,457
1979	2,451,269	1,923,997	1,213,381	691,834	719,616	226,086	41,627	106,884	7,374,694
1982(a)	2,708,145	2,127,185	1,440,013	744,043	783,405	244,257	60,864	109,743	8,217,655
1985	2,900,483	2,376,265	1,479,352	848,695	887,552	268,701	71,128	127,553	8,959,729
1988	2,993,615	2,556,029	1,567,163	869,081	946,984	284,298	(b)60,651	140,186	9,418,007
1991	3,106,909	2,756,377	1,694,095	921,667	1,071,981	300,390	84,324	163,175	10,098,918

(a) Up to 1982, excludes Commonwealth Government owned vehicles. (b) 1988 data considerably understated the number of vehicles on register. (c) Passenger Vehicles now include passenger carrying forward control vehicles that were coded to Buses in some States in the previous publication. (d) See paragraphs 10 and 11 (page 21) of the Explanatory Notes for a description of changes to type of vehicle. (e) In August 1983 the body type classification applied by the NSW registration authority for small bus type vehicle changed from panel vans to buses. (f) Light Commercial Vehicles now include some Load Carrying Vehicles with GVM up to 3.5 tonnes that were previously included with Rigid Trucks.

**TABLE 2. MOTOR VEHICLES ON REGISTER PER 1,000 OF POPULATION:  
STATE/TERRITORY OF REGISTRATION, 30 SEPTEMBER**

<i>Period</i>	<i>NSW</i>	<i>Vic.</i>	<i>Qld</i>	<i>SA</i>	<i>WA</i>	<i>Tas.</i>	<i>NT</i>	<i>ACT</i>	<i>Australia</i>
<b>PASSENGER VEHICLES</b>									
1976	345	382	343	399	374	385	195	384	453
1979	372	399	384	418	416	415	212	403	390
1982(a)	389	425	413	436	417	437	265	399	409
1985	395	457	407	482	446	453	279	419	426
1988	395	478	409	483	436	470	(b)228	434	431
1991(c)(d)	421	497	420	502	468	485	331	470	453
<b>ALL TRUCKS TYPES</b>									
1976	28	35	25	36	43	31	25	13	31
1979	32	38	27	37	50	36	19	13	34
1982(a)	34	42	28	39	52	37	42	18	37
1985	36	50	27	44	56	46	43	17	41
1988	35	54	24	43	57	49	(b)19	17	41
1991(d)	22	25	24	27	33	35	23	12	25
<b>OTHER MOTOR VEHICLES</b>									
1976	51	42	83	50	79	66	103	48	56
1979	56	44	99	53	87	75	112	50	63
1982(a)	63	46	112	56	87	82	128	36	69
1985	76	49	114	66	98	94	131	47	77
1988	78	49	112	66	93	100	121	47	77
1991(d)	71	86	107	82	119	119	150	58	88
<b>MOTOR CYCLES</b>									
1976	19	14	34	25	24	16	28	18	21
1979	18	12	35	23	22	11	20	16	20
1982(a)	22	18	38	28	26	12	31	19	24
1985	21	19	29	30	26	14	30	17	23
1988	16	17	22	24	23	14	(b)20	14	18
1991	12	16	20	22	23	13	27	16	16
<b>TOTAL</b>									
1976	442	472	485	510	519	497	351	463	471
1979	478	494	545	531	575	536	361	483	507
1982(a)	509	531	591	559	582	568	467	472	540
1985	529	575	579	622	628	607	489	499	567
1988	524	598	567	616	608	634	(b)389	511	567
1991	526	623	570	633	643	652	531	556	583

(a) Up to 1982, excludes Commonwealth Government owned vehicles. (b) 1988 data considerably understated the number of vehicles on register. (c) Passenger Vehicles now include passenger carrying forward control vehicles that were coded to Buses in some States in the previous publication. (d) See paragraphs 10 and 11 (page 21) of the Explanatory Notes for a description of changes to type of vehicle.

TABLE 3. PLANT AND EQUIPMENT, CARAVANS AND TRAILERS ON REGISTER:  
STATE/TERRITORY OF REGISTRATION, 30 SEPTEMBER

Period	NSW	Vic.	Qld	SA	WA	Tas.	NT	ACT	Australia
<b>PLANT AND EQUIPMENT</b>									
1976	25,427	59,112	34,356	7,667	23,685	7,142	605	590	156,584
1979	23,244	56,773	33,174	6,360	28,126	6,876	851	348	155,752
1982(a)	<u>22,948</u>	<u>60,303</u>	<u>34,681</u>	<u>5,795</u>	<u>27,981</u>	<u>6,870</u>	<u>1,268</u>	<u>237</u>	<u>160,083</u>
1985	23,681	64,347	32,316	7,028	28,559	6,865	1,372	792	164,960
1988	<u>29,693</u>	<u>73,971</u>	<u>35,587</u>	<u>6,786</u>	<u>32,794</u>	<u>7,702</u>	<u>1,169</u>	<u>1,218</u>	<u>188,920</u>
1991(b)	24,830	75,510	30,397	6,586	32,021	8,158	735	1,055	179,292
<b>CARAVANS</b>									
1976	67,276	100,203	36,949	30,816	23,000	5,364	554	2,415	266,577
1979	71,001	108,452	41,111	32,173	29,899	5,975	561	2,160	291,332
1982(a)	<u>68,158</u>	<u>107,830</u>	<u>39,327</u>	<u>30,086</u>	<u>30,662</u>	<u>5,638</u>	<u>912</u>	<u>1,698</u>	<u>284,311</u>
1985	63,003	107,842	36,618	30,857	33,309	5,117	850	1,661	279,257
1988	59,738	105,573	37,022	32,566	35,077	5,391	738	1,484	277,589
1991	55,617	99,762	36,541	31,025	36,414	5,288	1,003	1,381	267,031
<b>TRAILERS</b>									
1976	291,364	192,895	180,371	111,533	106,619	33,872	4,419	10,818	931,891
1979	350,657	203,794	208,882	121,447	133,048	36,477	4,521	12,095	1,070,921
1982(a)	<u>415,123</u>	<u>221,349</u>	<u>239,622</u>	<u>134,031</u>	<u>150,484</u>	<u>40,694</u>	<u>6,489</u>	<u>13,896</u>	<u>1,221,688</u>
1985	456,531	243,286	259,674	157,345	170,951	43,002	9,263	17,542	1,357,594
1988	473,457	273,853	283,594	170,937	185,200	52,015	9,964	18,165	1,467,185
1991	482,795	301,433	307,632	189,520	203,657	55,516	14,282	20,017	1,574,852
<b>TOTAL</b>									
1976	384,067	352,210	249,676	150,016	153,304	46,378	5,578	13,823	1,355,052
1979	444,902	369,019	283,167	159,980	191,073	49,328	5,933	14,603	1,518,005
1982(a)	<u>506,229</u>	<u>389,482</u>	<u>313,630</u>	<u>169,912</u>	<u>209,127</u>	<u>53,202</u>	<u>8,669</u>	<u>15,831</u>	<u>1,666,082</u>
1985	543,215	415,475	328,608	195,230	232,819	54,984	11,485	19,995	1,801,811
1988	<u>562,888</u>	<u>453,397</u>	<u>356,203</u>	<u>210,289</u>	<u>253,071</u>	<u>65,108</u>	<u>11,871</u>	<u>20,867</u>	<u>1,933,694</u>
1991	563,242	476,705	374,570	227,131	272,092	68,962	16,020	22,453	2,021,175

(a) Up to 1982, excludes Commonwealth Government owned vehicles. (b) Includes tractors.

TABLE 4. MOTOR VEHICLES ON REGISTER BY YEAR OF MANUFACTURE AND TYPE OF VEHICLE (a):  
STATE/TERRITORY OF REGISTRATION, 30 SEPTEMBER 1991

Year of manufacture	State of registration								Australia
	NSW	Vic.	Qld	SA	WA	Tas.	NT	ACT	
PASSENGER VEHICLES (b)									
To 1930	652	1,326	271	319	610	55	11	86	3,330
1931 to 1958	4,913	9,192	2,118	2,601	2,443	898	113	352	22,630
1959 to 1970	89,217	126,383	55,380	49,274	42,663	16,274	1,645	6,137	386,973
1971 to 1974	160,335	201,900	97,272	75,752	71,770	24,458	3,397	11,733	646,617
1975 to 1978	331,243	359,775	188,061	130,812	130,283	42,067	7,473	19,994	1,209,708
1979 to 1982	529,761	457,134	291,553	150,367	167,859	46,013	11,478	27,510	1,681,675
1983 to 1986	622,140	493,225	292,280	162,235	174,620	48,887	13,546	33,407	1,840,340
1987	122,303	102,544	51,894	28,699	34,291	8,048	2,495	6,151	356,425
1988	150,820	109,180	63,399	33,399	39,966	8,985	3,074	6,916	415,739
1989	182,342	124,179	76,400	36,092	48,317	10,716	3,666	10,013	491,725
1990	181,212	124,030	79,271	39,520	41,729	10,996	3,562	9,440	489,760
1991	85,067	68,061	39,123	21,278	25,231	6,003	1,977	5,878	252,618
Not stated	24,892	20,062	9,773	310	202	176	116	382	55,913
Total	2,484,897	2,196,991	1,246,795	730,658	779,984	223,576	52,553	137,999	7,853,453
LIGHT COMMERCIAL VEHICLES (b)									
To 1930	81	168	41	34	38	10	6	9	387
1931 to 1958	1,652	2,477	1,347	650	665	346	48	33	7,218
1959 to 1970	13,828	23,288	14,117	7,454	8,645	4,642	470	724	73,168
1971 to 1974	29,958	35,580	26,168	12,141	15,974	5,735	1,277	1,338	128,171
1975 to 1978	58,145	60,613	49,094	20,739	34,205	9,849	3,215	2,213	238,073
1979 to 1982	88,476	69,439	75,383	24,667	41,823	9,865	5,583	2,730	317,966
1983 to 1986	100,003	95,676	72,609	27,420	46,900	12,297	6,565	3,733	365,203
1987	16,475	14,230	9,194	3,769	6,961	1,569	865	557	53,620
1988	24,482	15,861	14,005	4,854	10,281	1,904	1,180	825	73,392
1989	29,865	19,383	17,392	5,711	10,567	2,647	1,360	1,596	88,521
1990	27,819	16,798	15,907	5,667	8,179	2,445	1,310	981	79,106
1991	13,288	8,242	8,783	2,962	4,912	1,301	771	625	40,884
Not stated	6,686	3,449	2,903	265	150	107	149	289	13,998
Total	410,758	365,204	306,943	116,333	189,300	52,717	22,799	15,653	1,479,707
RIGID TRUCKS									
To 1930	7	9	2	—	5	—	1	1	25
1931 to 1958	547	2,156	300	678	367	144	2	2	4,196
1959 to 1970	10,012	14,791	6,055	5,895	7,510	1,661	80	45	46,049
1971 to 1974	8,916	9,653	6,059	3,369	4,943	1,485	154	98	34,677
1975 to 1978	16,034	14,052	9,097	5,142	8,408	2,322	332	233	55,620
1979 to 1982	21,157	13,072	12,365	4,656	6,874	1,874	424	328	60,750
1983 to 1986	22,458	15,039	11,675	5,388	6,336	2,121	566	550	64,133
1987	4,004	3,184	1,585	795	1,145	278	84	118	11,193
1988	5,483	3,306	2,465	935	1,576	359	119	134	14,377
1989	6,531	3,617	2,993	1,027	1,747	373	152	178	16,618
1990	5,390	3,372	2,346	1,031	1,306	325	158	166	14,094
1991	1,793	1,437	1,017	377	537	98	128	63	5,450
Not stated	3,227	760	1,210	322	59	80	36	209	5,903
Total	105,559	84,448	57,169	29,615	40,813	11,120	2,236	2,125	333,085
ARTICULATED TRUCKS									
To 1930	—	—	—	—	—	—	—	1	1
1931 to 1958	27	28	4	4	6	2	—	—	71
1959 to 1970	879	986	557	225	358	42	41	—	3,088
1971 to 1974	1,116	1,321	743	402	584	90	85	8	4,349
1975 to 1978	2,230	2,786	1,532	875	1,345	240	160	17	9,185
1979 to 1982	2,577	2,638	1,935	968	1,442	286	275	29	10,150
1983 to 1986	2,971	2,775	1,730	860	1,063	463	276	44	10,182
1987	656	798	400	191	219	115	58	12	2,449
1988	985	851	617	186	263	96	85	22	3,105
1989	1,182	1,052	666	162	295	103	83	17	3,560
1990	1,032	692	530	147	195	91	70	28	2,785
1991	265	259	201	77	57	26	13	2	900
Not stated	830	172	34	42	2	8	5	96	1,189
Total	14,750	14,358	8,949	4,139	5,829	1,562	1,151	276	51,014

See footnotes at end of table.

TABLE 4. MOTOR VEHICLES ON REGISTER BY YEAR OF MANUFACTURE AND TYPE OF VEHICLE (a):  
STATE/TERRITORY OF REGISTRATION, 30 SEPTEMBER 1991—continued

Year of manufacture	State of registration								Australia
	NSW	Vic.	Qld	SA	WA	Tas.	NT	ACT	
OTHER TRUCKS									
To 1930	1	6	—	2	3	2	1	1	16
1931 to 1958	43	187	49	26	247	42	—	1	595
1959 to 1970	602	1,401	516	476	1,271	433	13	53	4,765
1971 to 1974	1,714	1,545	936	983	1,708	536	16	157	7,595
1975 to 1978	2,576	2,436	1,336	1,431	2,341	899	34	249	11,302
1979 to 1982	1,979	1,866	1,205	490	1,183	523	36	109	7,391
1983 to 1986	2,085	2,012	990	1,358	1,200	545	29	108	8,327
1987	204	427	166	192	132	82	4	8	1,215
1988	325	393	200	298	203	84	14	7	1,524
1989	310	369	186	481	206	27	17	326	1,922
1990	216	332	162	369	126	48	15	14	1,282
1991	61	182	75	85	49	16	—	—	468
Not stated	346	78	65	22	4	10	10	10	545
Total	10,462	11,234	5,886	6,213	8,673	3,247	189	1,043	46,947
BUSES									
To 1930	2	1	—	—	3	—	—	—	6
1931 to 1958	31	51	3	4	45	6	—	—	140
1959 to 1970	591	942	590	186	550	296	19	17	3,191
1971 to 1974	755	1,380	651	237	615	198	22	16	3,874
1975 to 1978	1,220	2,385	1,160	580	1,242	379	55	167	7,188
1979 to 1982	1,621	3,065	1,987	577	1,432	270	104	205	9,261
1983 to 1986	1,948	2,452	2,703	812	1,868	367	185	298	10,633
1987	456	565	598	170	550	99	59	62	2,559
1988	591	589	579	160	731	100	74	108	2,932
1989	1,263	775	526	154	636	113	206	167	3,840
1990	1,313	858	542	241	515	110	210	101	3,890
1991	669	528	298	125	522	59	114	66	2,381
Not stated	413	71	55	18	12	10	11	50	640
Total	10,873	13,662	9,692	3,264	8,721	2,007	1,059	1,257	50,535
MOTOR CYCLES									
To 1930	16	32	6	3	129	1	2	7	196
1931 to 1958	347	812	550	92	723	73	20	43	2,660
1959 to 1970	1,063	1,033	1,074	139	1,013	88	47	78	4,535
1971 to 1974	2,624	2,535	2,866	322	1,853	275	111	169	10,755
1975 to 1978	4,499	5,502	5,709	410	3,817	573	264	347	21,121
1979 to 1982	18,686	18,188	17,005	881	10,380	1,645	962	1,364	69,111
1983 to 1986	20,899	22,375	16,635	682	10,686	2,127	1,490	1,510	76,404
1987	3,409	3,437	2,888	108	1,739	230	283	172	12,266
1988	4,156	3,634	3,033	151	2,117	258	306	200	13,855
1989	4,824	3,318	4,261	262	2,893	349	344	335	16,586
1990	4,882	4,447	3,108	950	2,137	330	316	300	16,470
1991	2,263	3,019	1,188	716	1,135	189	153	169	8,832
Not stated	1,942	2,148	338	26,729	39	23	39	128	31,386
Total	69,610	70,480	58,661	31,445	38,661	6,161	4,337	4,822	284,177
TOTAL									
To 1930	759	1,542	320	358	788	68	21	105	3,961
1931 to 1958	7,560	14,903	4,371	4,055	4,496	1,511	183	431	37,510
1959 to 1970	116,192	168,824	78,289	63,649	62,010	23,436	2,315	7,054	521,769
1971 to 1974	205,418	253,914	134,695	93,206	97,447	32,777	5,062	13,519	836,038
1975 to 1978	415,947	447,549	255,989	159,989	181,641	56,329	11,533	23,220	1,552,197
1979 to 1982	664,257	565,402	401,433	182,606	230,993	60,476	18,862	32,275	2,156,304
1983 to 1986	772,504	633,554	398,622	198,755	242,673	66,807	22,657	39,650	2,375,222
1987	147,507	125,185	66,725	33,924	45,037	10,421	3,848	7,080	439,727
1988	186,842	133,814	84,298	39,983	55,137	11,786	4,852	8,212	524,924
1989	226,317	152,693	102,424	43,889	64,661	14,328	5,828	12,632	622,772
1990	221,864	150,529	101,866	47,925	54,187	14,345	5,641	11,030	607,387
1991	103,406	81,728	50,685	25,620	32,443	7,692	3,156	6,803	311,533
Not stated	38,336	26,740	14,378	27,708	468	414	366	1,164	109,574
Total	3,106,909	2,756,377	1,694,095	921,667	1,071,981	300,390	84,324	163,175	10,098,918

(a) See paragraphs 10 and 11 (page 21) of Explanatory Notes for an explanation of changes in vehicle classifications that have been introduced in this publication. (b) In previous Motor Vehicle Census publications Passenger Vehicles were known as Cars and Station Wagons while Light Commercial Vehicles comprised Commercial Vehicles Utilities and Panel Vans.

**TABLE 5. PASSENGER VEHICLES (a) ON REGISTER BY MAKE OF VEHICLE AND YEAR OF MANUFACTURE: AUSTRALIA, 30 SEPTEMBER 1991**

Make of vehicle	Year of manufacture										Total
	1974 and earlier	1975 to 1978	1979 to 1982	1983 to 1986	1987	1988	1989	1990	1991	Not stated	
<b>Australian Resident Manufacturers(b) —</b>											
Ford	197,688	238,685	368,316	493,289	107,383	108,366	124,438	113,922	52,687	12,301	1,817,075
Holden	301,652	298,330	401,934	361,475	77,947	81,750	93,434	88,638	42,766	13,600	1,761,526
Mitsubishi	1,444	2,159	133,912	215,187	44,484	52,440	59,285	49,269	27,000	3,063	588,243
Nissan (incl Datsun)	69,679	131,853	179,497	172,017	31,707	45,188	54,582	61,567	22,830	5,751	774,671
Toyota	99,067	180,071	223,011	309,074	52,367	71,116	80,299	90,471	48,985	6,849	1,161,310
<b>Major Imported Makes —</b>											
B.M.W.	3,634	5,504	8,453	15,418	2,161	2,875	4,890	3,684	2,589	486	49,694
Chrysler	68,427	98,977	73,987	165	12	8	12	2	5	1,698	243,293
Daihatsu	117	164	8,763	15,587	2,243	3,175	7,304	12,854	9,967	325	60,499
Honda	9,414	27,026	37,189	33,629	7,741	13,589	15,718	12,499	8,141	974	165,920
Hyundai	1	2	7	2,052	4,247	4,945	6,857	7,386	6,769	192	32,458
Jaguar	9,170	4,247	2,916	3,939	864	968	1,015	403	84	234	23,840
Leyland	10,332	13,201	1,938	420	6	13	5	1	—	233	26,149
Mazda	44,713	74,434	117,137	98,041	8,909	11,326	14,798	19,143	12,361	2,071	402,933
Mercedes Benz	21,545	15,182	13,186	14,901	3,129	3,300	3,294	2,417	698	755	78,407
Morris	27,244	363	56	13	—	6	2	2	—	987	28,673
Peugeot	6,483	6,512	6,299	5,670	462	488	1,066	578	194	220	27,972
Renault	8,528	10,003	3,678	3,280	89	146	80	62	35	179	26,080
Subaru	940	6,429	24,499	32,191	2,199	3,104	5,873	9,425	7,497	611	92,768
Suzuki	32	166	1,691	9,115	1,059	1,346	5,191	7,952	5,678	165	32,395
Volkswagen	57,436	18,036	3,281	560	56	47	397	467	235	1,386	81,901
Volvo	13,978	21,163	23,795	19,923	2,976	3,541	3,552	2,414	1,116	474	92,932
Not stated	4,903	339	115	33	20	76	162	76	9	79	5,812
Other	103,123	56,862	48,015	34,361	6,364	7,926	9,471	6,528	2,972	3,280	278,902
<b>Total</b>	<b>1,059,550</b>	<b>1,209,708</b>	<b>1,681,675</b>	<b>1,840,340</b>	<b>356,425</b>	<b>415,739</b>	<b>491,725</b>	<b>489,760</b>	<b>252,618</b>	<b>55,913</b>	<b>7,853,453</b>

(a) Passenger Vehicles now include passenger carrying forward control vehicles that were coded to Buses in some States in the previous publication. (b) See paragraph 12 (page 21) of Explanatory Notes for a definition of Australian Resident Manufacturers.

**TABLE 6. PASSENGER VEHICLES (a) ON REGISTER BY MAKE OF VEHICLE: STATE/TERRITORY OF REGISTRATION, 30 SEPTEMBER 1991**

Make of vehicle	State of registration								Australia
	NSW	Vic.	Qld	SA	WA	Tas.	NT	ACT	
<b>Australian Resident Manufacturers(b) —</b>									
Ford	551,778	540,498	304,811	159,403	173,984	45,395	9,421	31,785	1,817,075
Holden	530,064	513,192	264,747	183,028	179,939	54,899	10,375	25,282	1,761,526
Mitsubishi	202,737	138,844	90,801	66,677	59,909	13,345	3,993	11,937	588,243
Nissan (incl Datsun)	254,972	225,772	132,042	71,966	40,152	26,741	6,016	17,010	774,671
Toyota	396,282	302,833	193,662	90,666	113,208	33,888	13,115	17,656	1,161,310
<b>Major Imported Makes —</b>									
B.M.W.	18,641	14,721	5,717	3,847	4,744	923	96	1,005	49,694
Chrysler	75,149	64,194	28,030	36,274	26,551	7,955	1,085	4,055	243,293
Daihatsu	25,950	9,544	11,478	4,762	5,545	1,182	690	1,348	60,499
Honda	64,811	43,394	23,440	10,681	15,755	3,692	551	3,596	165,920
Hyundai	10,627	6,818	5,075	1,935	6,704	260	329	710	32,458
Jaguar	7,076	7,823	3,125	2,201	2,604	525	69	417	23,840
Leyland	6,890	5,153	4,805	3,104	3,959	1,255	394	589	26,149
Mazda	117,697	121,855	71,951	33,684	35,191	12,210	2,499	7,846	402,933
Mercedes Benz	27,006	26,467	10,075	4,884	7,127	1,342	192	1,314	78,407
Morris	6,350	8,394	4,407	4,059	3,709	1,300	88	366	28,673
Peugeot	8,335	10,858	3,438	1,920	1,399	1,027	76	919	27,972
Renault	6,259	9,442	2,632	2,889	2,699	1,107	126	926	26,080
Subaru	33,174	20,232	14,626	7,622	10,260	3,976	829	2,049	92,768
Suzuki	11,721	4,766	7,529	2,010	4,352	539	840	638	32,395
Volkswagen	26,279	19,977	12,382	9,670	8,431	2,750	356	2,056	81,901
Volvo	35,331	23,694	13,414	7,025	8,807	2,198	278	2,185	92,932
Not stated	201	3,766	7	528	1,274	2	—	34	5,812
Other	67,567	74,754	38,601	21,823	63,681	7,065	1,135	4,276	278,902
<b>Total</b>	<b>2,484,897</b>	<b>2,196,991</b>	<b>1,246,795</b>	<b>730,658</b>	<b>779,984</b>	<b>223,576</b>	<b>52,553</b>	<b>137,999</b>	<b>7,853,453</b>

(a) Passenger Vehicles now include passenger carrying forward control vehicles that were coded to Buses in some States in the previous publication. (b) See paragraph 12 (page 21) of Explanatory Notes for a definition of Australian Resident Manufacturers.

TABLE 7. LIGHT COMMERCIAL VEHICLES (a) ON REGISTER BY MAKE OF VEHICLE AND YEAR OF MANUFACTURE:  
AUSTRALIA, 30 SEPTEMBER 1991

Make of vehicle	Year of manufacture									Not stated	Total
	1974 and earlier	1975 to 1978	1979 to 1982	1983 to 1986	1987	1988	1989	1990	1991		
Chrysler	6,119	4,856	1,186	8	1	2	1	—	—	108	12,281
Daihatsu	466	4,417	9,486	9,736	1,259	1,588	1,221	612	97	231	29,113
Dodge	4,939	2,120	104	5	—	2	—	1	—	158	7,329
Ford	37,028	44,806	54,786	59,386	14,097	16,493	20,302	16,062	6,702	2,417	272,079
Holden	78,120	70,173	59,146	33,025	1,211	2,677	8,335	11,095	6,459	2,935	273,176
Land Rover	16,861	4,494	1,832	295	47	24	14	9	1	594	24,171
Leyland	1,983	4,318	2,815	54	4	2	1	1	—	103	9,281
Mazda	2,904	10,063	16,331	24,131	2,482	2,678	2,722	3,287	2,634	570	67,802
Mitsubishi	47	15	13,868	28,371	4,268	8,249	11,184	9,980	5,689	501	82,172
Nissan (incl Datsun)	10,663	20,049	36,873	49,883	6,926	10,812	11,835	8,623	3,813	1,228	160,705
Subaru	1	359	2,146	7,396	1,416	2,655	3,689	3,376	1,685	185	22,908
Suzuki	654	6,165	22,278	25,081	2,917	3,135	910	831	253	470	62,694
Toyota	23,579	50,451	84,835	121,223	18,756	24,767	27,277	24,370	13,261	3,276	391,795
Volkswagen	10,521	6,715	760	683	32	40	888	603	229	177	20,648
Not stated	52	30	12	11	1	9	3	6	3	31	158
Other	15,007	9,042	11,508	5,915	203	259	139	250	58	1,014	43,395
<b>Total</b>	<b>208,944</b>	<b>238,073</b>	<b>317,966</b>	<b>365,203</b>	<b>53,620</b>	<b>73,392</b>	<b>88,521</b>	<b>79,106</b>	<b>40,884</b>	<b>13,998</b>	<b>1,479,707</b>

(a) Light Commercial Vehicles now include some load carrying vehicles with GVM up to 3.5 tonnes that were previously included with Rigid Trucks.

TABLE 8. LIGHT COMMERCIAL VEHICLES (a) ON REGISTER BY MAKE OF VEHICLE:  
STATE/TERRITORY OF REGISTRATION, 30 SEPTEMBER 1991

Make of vehicle	State of registration								Australia
	NSW	Vic.	Qld	SA	WA	Tas.	NT	ACT	
Chrysler	3,300	3,329	899	2,746	1,169	618	68	152	12,281
Daihatsu	8,497	5,429	7,313	2,277	3,994	723	570	310	29,113
Dodge	948	3,083	1,265	484	1,113	307	92	37	7,329
Ford	76,911	80,462	48,711	19,078	32,178	8,873	2,397	3,469	272,079
Holden	77,545	73,921	45,726	23,649	35,079	11,869	2,706	2,681	273,176
Land Rover	5,959	4,554	6,557	1,718	3,665	1,506	174	38	24,171
Leyland	2,269	1,566	2,426	363	2,038	238	279	102	9,281
Mazda	17,027	19,134	15,438	5,287	6,724	2,145	901	1,146	67,802
Mitsubishi	24,240	20,922	13,704	7,938	10,050	3,124	1,268	926	82,172
Nissan (incl Datsun)	42,088	39,869	38,774	13,004	14,563	7,674	2,820	1,913	160,705
Subaru	9,648	4,710	3,627	1,876	2,020	665	159	203	22,908
Suzuki	20,203	12,421	12,808	4,736	9,882	1,468	637	539	62,694
Toyota	108,500	80,732	97,652	27,290	52,169	11,939	9,995	3,518	391,795
Volkswagen	6,186	5,247	3,574	2,715	2,040	473	212	201	20,648
Not stated	47	7	12	46	22	2	1	21	158
Other	7,390	9,818	8,457	3,126	12,594	1,093	520	397	43,395
<b>Total</b>	<b>410,758</b>	<b>365,204</b>	<b>306,943</b>	<b>116,333</b>	<b>189,300</b>	<b>52,717</b>	<b>22,799</b>	<b>15,653</b>	<b>1,479,707</b>

(a) Light Commercial Vehicles now include some load carrying vehicles with GVM up to 3.5 tonnes that were previously included with Rigid Trucks.



**TABLE 9. RIGID TRUCKS (a) ON REGISTER BY MAKE OF VEHICLE AND YEAR OF MANUFACTURE:  
AUSTRALIA, 30 SEPTEMBER 1991**

Make of vehicle	Year of manufacture									Not stated	Total
	1974 and earlier	1975 to 1978	1979 to 1982	1983 to 1986	1987	1988	1989	1990	1991		
Bedford	19,642	4,571	1,139	15	4	3	6	1	—	654	26,035
Daihatsu	1,188	2,001	4,868	4,645	657	924	1,038	665	249	201	16,436
Dodge	10,283	6,331	857	8	—	—	—	—	1	335	17,815
Ford	12,273	7,083	8,602	8,497	1,360	1,580	1,906	1,548	475	769	44,093
Hino	110	882	3,513	6,013	829	1,139	1,389	1,196	518	286	15,875
International	23,926	10,973	9,272	3,674	842	867	983	730	204	1,235	52,706
Isuzu	653	3,306	8,819	12,535	2,178	2,962	3,709	3,319	1,317	525	39,323
Leyland	1,251	1,795	1,732	164	1	4	—	1	—	93	5,041
Mazda	932	2,205	1,854	4,382	770	1,063	1,075	1,008	488	144	13,921
Mitsubishi	14	81	4,501	9,063	1,799	2,549	2,905	2,631	890	335	24,768
Nissan (incl Datsun)	1,067	1,649	1,642	2,786	352	589	407	213	84	181	8,970
Toyota	4,638	7,717	8,346	7,605	1,548	1,659	1,637	1,352	647	538	35,687
Volvo	615	1,110	1,311	1,154	185	300	378	360	141	70	5,624
Not stated	360	257	260	454	87	111	137	54	2	24	1,746
Other	7,995	5,659	4,034	3,138	581	627	1,048	1,016	434	513	25,045
<b>Total</b>	<b>84,947</b>	<b>55,620</b>	<b>60,750</b>	<b>64,133</b>	<b>11,193</b>	<b>14,377</b>	<b>16,618</b>	<b>14,094</b>	<b>5,450</b>	<b>5,903</b>	<b>333,085</b>

(a) Rigid trucks with a GVM up to 3.5 tonnes previously included in this category are now classified as Light Commercial Vehicles. See paragraphs 10 and 11 (page 21) of Explanatory Notes.

**TABLE 10. RIGID TRUCKS (a) ON REGISTER BY MAKE OF VEHICLE:  
STATE/TERRITORY OF REGISTRATION, 30 SEPTEMBER 1991**

Make of vehicle	State of registration								Australia
	NSW	Vic.	Qld	SA	WA	Tas.	NT	ACT	
Bedford	5,426	9,086	3,539	3,811	2,808	1,252	73	40	26,035
Daihatsu	8,292	2,806	2,863	727	1,167	424	75	82	16,436
Dodge	4,946	5,357	2,183	1,192	3,484	560	51	42	17,815
Ford	12,582	11,638	7,609	4,084	6,363	1,347	155	315	44,093
Hino	5,258	3,034	3,958	1,501	1,394	374	242	114	15,875
International	14,730	15,215	9,492	4,196	6,992	1,655	192	234	52,706
Isuzu	15,276	10,032	5,847	2,533	3,566	1,502	206	361	39,323
Leyland	1,437	1,076	913	638	793	133	34	17	5,041
Mazda	3,640	4,341	2,751	918	1,538	460	98	175	13,921
Mitsubishi	8,887	4,924	3,926	2,357	3,417	795	282	180	24,768
Nissan (incl Datsun)	3,614	1,732	1,773	617	830	247	78	79	8,970
Toyota	13,635	7,221	6,705	1,806	4,143	1,360	543	274	35,687
Volvo	1,867	1,051	1,092	507	765	275	32	35	5,624
Not stated	16	3	6	1,708	6	2	—	5	1,746
Other	5,953	6,932	4,512	3,020	3,547	734	175	172	25,045
<b>Total</b>	<b>105,559</b>	<b>84,448</b>	<b>57,169</b>	<b>29,615</b>	<b>40,813</b>	<b>11,120</b>	<b>2,236</b>	<b>2,125</b>	<b>333,085</b>

(a) Rigid trucks with a GVM up to 3.5 tonnes previously included in this category are now classified as Light Commercial Vehicles. See paragraphs 10 and 11 (page 21) of Explanatory Notes.

TABLE 11. ARTICULATED TRUCKS ON REGISTER BY MAKE OF VEHICLE AND YEAR OF MANUFACTURE:  
AUSTRALIA, 30 SEPTEMBER 1991

Make of vehicle	Year of manufacture									Not stated	Total
	1974 and earlier	1975 to 1978	1979 to 1982	1983 to 1986	1987	1988	1989	1990	1991		
Atkinson	205	378	236	249	31	22	1	—	1	26	1,149
Ford	284	705	974	1,198	242	443	553	292	45	88	4,824
International	1,569	1,460	2,120	1,500	381	441	417	318	121	242	8,569
Kenworth	762	1,329	1,660	1,530	473	458	617	411	88	170	7,498
Mack	754	868	1,151	1,031	354	477	396	387	85	87	5,590
Mercedes Benz	1,453	1,061	612	919	195	163	168	124	71	133	4,899
Nissan (incl Datsun)	38	365	276	329	35	51	28	30	1	18	1,171
Scania	73	341	525	1,025	260	266	317	286	164	84	3,341
Volvo	605	1,008	1,098	1,151	229	454	551	525	191	103	5,915
White	225	580	693	6	2	2	—	—	—	25	1,533
Not stated	30	24	54	85	35	17	4	5	6	35	295
Other	1,511	1,066	751	1,159	212	311	508	407	127	178	6,230
Total	7,509	9,185	10,150	10,182	2,449	3,105	3,560	2,785	900	1,189	51,014

TABLE 12. ARTICULATED TRUCKS ON REGISTER BY MAKE OF VEHICLE:  
STATE/TERRITORY OF REGISTRATION, 30 SEPTEMBER 1991

Make of vehicle	State of registration								Australia
	NSW	Vic.	Qld	SA	WA	Tas.	NT	ACT	
Atkinson	353	397	123	111	132	19	9	5	1,149
Ford	1,568	1,467	712	394	421	134	96	32	4,824
International	2,647	2,907	1,512	560	608	211	95	29	8,569
Kenworth	2,186	2,497	1,158	462	750	113	252	80	7,498
Mack	1,653	970	1,307	360	729	282	270	19	5,590
Mercedes Benz	1,420	1,640	640	487	581	75	38	18	4,899
Nissan (incl Datsun)	341	271	284	87	142	20	16	10	1,171
Scania	787	881	548	331	543	187	52	12	3,341
Volvo	1,735	1,310	1,105	527	930	247	41	20	5,915
White	412	317	346	164	224	29	39	2	1,533
Not stated	—	2	—	289	3	1	—	—	295
Other	1,648	1,699	1,214	367	766	244	243	49	6,230
Total	14,750	14,358	8,949	4,139	5,829	1,562	1,151	276	51,014

**TABLE 13. OTHER TRUCKS (a) ON REGISTER BY MAKE OF VEHICLE AND YEAR OF MANUFACTURE:  
AUSTRALIA, 30 SEPTEMBER 1991**

Make of vehicle	Year of manufacture										Total
	1974 and earlier	1975 to 1978	1979 to 1982	1983 to 1986	1987	1988	1989	1990	1991	Not stated	
Bedford	1,587	777	172	5	1	1	2	—	—	34	2,579
Ford	1,277	1,248	1,235	1,654	262	372	379	349	179	94	7,049
International	1,395	669	654	387	44	34	45	25	12	26	3,291
Isuzu	34	49	130	279	97	171	269	68	23	13	1,133
Mazda	50	210	275	635	83	88	105	66	16	13	1,541
Mitsubishi	3	5	207	318	36	96	126	47	27	9	874
Nissan (incl Datsun)	100	895	621	926	108	110	86	26	18	25	2,915
Toyota	867	2,016	2,861	2,200	285	374	243	250	113	87	9,296
Volkswagen	4,033	3,373	280	146	8	4	83	48	16	58	8,049
Not stated	990	1,158	287	1,063	106	181	324	194	—	64	4,367
Other	2,635	902	669	714	185	93	260	209	64	122	5,853
<b>Total</b>	<b>12,971</b>	<b>11,302</b>	<b>7,391</b>	<b>8,327</b>	<b>1,215</b>	<b>1,524</b>	<b>1,922</b>	<b>1,282</b>	<b>468</b>	<b>545</b>	<b>46,947</b>

(a) See paragraphs 10 and 11 (page 21) of Explanatory Notes for an explanation of changes in vehicle classifications that have been introduced in this publication. In some States, changes in treatment have resulted in changes in the numbers of Other Trucks.

**TABLE 14. OTHER TRUCKS (a) ON REGISTER BY MAKE OF VEHICLE:  
STATE/TERRITORY OF REGISTRATION, 30 SEPTEMBER 1991**

Make of vehicle	State of registration								Australia
	NSW	Vic.	Qld	SA	WA	Tas.	NT	ACT	
Bedford	406	990	265	96	523	246	4	49	2,579
Ford	2,054	1,727	1,139	484	1,119	371	63	92	7,049
International	494	1,414	360	268	397	288	24	46	3,291
Isuzu	156	600	117	19	52	68	3	118	1,133
Mazda	291	304	239	42	452	180	4	29	1,541
Mitsubishi	246	214	139	33	159	46	3	34	874
Nissan (incl Datsun)	618	851	361	62	530	408	4	81	2,915
Toyota	2,713	1,926	1,398	290	2,162	596	29	182	9,296
Volkswagen	2,434	1,617	951	93	1,990	725	1	238	8,049
Not stated	7	26	15	4,304	2	7	2	4	4,367
Other	1,043	1,565	902	522	1,287	312	52	170	5,853
<b>Total</b>	<b>10,462</b>	<b>11,234</b>	<b>5,886</b>	<b>6,213</b>	<b>8,673</b>	<b>3,247</b>	<b>189</b>	<b>1,043</b>	<b>46,947</b>

(a) See paragraphs 10 and 11 (page 21) of Explanatory Notes for an explanation of changes in vehicle classifications that have been introduced in this publication. In some States, changes in treatment have resulted in changes in the numbers of Other Trucks.

TABLE 15. BUSES (a) ON REGISTER BY MAKE OF VEHICLE AND YEAR OF MANUFACTURE:  
AUSTRALIA, 30 SEPTEMBER 1991

Make of vehicle	Year of manufacture									Not stated	Total
	1974 and earlier	1975 to 1978	1979 to 1982	1983 to 1986	1987	1988	1989	1990	1991		
Bedford	2,124	1,096	568	9	—	2	1	2	1	48	3,851
Denning	89	112	176	186	48	74	48	30	8	18	789
Ford	372	222	165	69	10	12	2	3	6	5	866
Hino	299	216	451	586	153	143	128	151	71	33	2,231
Leyland	1,562	527	327	286	43	51	22	26	3	72	2,919
MAN	1	146	386	305	61	75	146	61	16	6	1,203
Mazda	3	185	494	1,078	130	198	216	177	102	79	2,662
Mercedes Benz	63	459	863	1,204	281	285	209	120	60	39	3,583
Nissan (incl Datsun)	26	661	1,349	1,516	162	221	261	237	126	40	4,599
Toyota	448	1,524	3,071	3,462	1,169	1,278	2,350	2,689	1,795	172	17,958
Volkswagen	1,073	927	156	64	1	1	1	3	1	2	2,229
Volvo	21	646	432	501	120	101	139	80	50	38	2,128
Not stated	4	20	41	96	15	16	9	4	2	2	209
Other	1,126	447	782	1,271	366	475	308	307	140	86	5,308
<b>Total</b>	<b>7,211</b>	<b>7,188</b>	<b>9,261</b>	<b>10,633</b>	<b>2,559</b>	<b>2,932</b>	<b>3,840</b>	<b>3,890</b>	<b>2,381</b>	<b>640</b>	<b>50,535</b>

(a) Buses on register include passenger carrying vehicles with more than 9 seats (including that of the driver). Vehicles with less than 9 seats previously included in this category are now classified as forward control vehicles and included with Passenger Vehicles.

TABLE 16. BUSES (a) ON REGISTER BY MAKE OF VEHICLE:  
STATE/TERRITORY OF REGISTRATION, 30 SEPTEMBER 1991

Make of vehicle	State of registration								Australia
	NSW	Vic.	Qld	SA	WA	Tas.	NT	ACT	
Bedford	1,084	1,540	425	287	159	329	19	8	3,851
Denning	340	273	44	75	2	32	21	2	789
Ford	65	391	186	56	102	45	11	10	866
Hino	530	600	302	284	385	87	28	15	2,231
Leyland	1,228	438	574	107	458	69	34	11	2,919
MAN	242	294	271	188	42	9	19	138	1,203
Mazda	546	949	389	166	381	173	29	29	2,662
Mercedes Benz	1,850	566	150	121	627	122	58	89	3,583
Nissan (incl Datsun)	523	1,531	1,536	133	372	222	33	249	4,599
Toyota	2,877	4,078	3,956	875	4,550	568	692	362	17,958
Volkswagen	1	1,494	127	8	558	24	6	11	2,229
Volvo	564	513	405	480	36	103	15	12	2,128
Not stated	—	3	—	203	1	2	—	—	209
Other	1,023	992	1,327	281	1,048	222	94	321	5,308
<b>Total</b>	<b>10,873</b>	<b>13,662</b>	<b>9,692</b>	<b>3,264</b>	<b>8,721</b>	<b>2,007</b>	<b>1,059</b>	<b>1,257</b>	<b>50,535</b>

(a) Buses on register include passenger carrying vehicles with more than 9 seats (including that of the driver). Vehicles with less than 9 seats previously included in this category are now classified as forward control vehicles and included with Passenger Vehicles.

TABLE 17. MOTOR CYCLES ON REGISTER BY MAKE OF VEHICLE AND YEAR OF MANUFACTURE:  
AUSTRALIA, 30 SEPTEMBER 1991

Make of vehicle	Year of manufacture									Not stated	Total
	1974 and earlier	1975 to 1978	1979 to 1982	1983 to 1986	1987	1988	1989	1990	1991		
B.M.W.	726	957	1,375	3,955	388	367	389	433	262	801	9,653
Ducati	443	803	1,152	684	49	78	222	116	88	407	4,042
Harley Davidson	2,779	860	2,002	2,586	658	905	1,343	1,587	1,174	1,117	15,011
Honda	4,681	7,014	22,800	25,713	4,190	4,244	4,493	4,299	2,303	10,161	89,898
Kawasaki	845	2,574	7,911	10,864	1,825	2,614	2,484	2,778	1,731	3,786	37,412
Suzuki	1,357	2,672	14,922	14,258	1,544	2,261	2,769	3,257	1,125	5,192	49,357
Triumph	1,801	767	510	87	28	1	—	—	—	332	3,526
Yamaha	1,687	4,617	17,193	16,670	3,366	2,830	4,635	3,679	1,964	8,687	65,328
Not stated	44	20	17	15	2	4	2	2	3	172	281
Other	3,783	837	1,229	1,572	216	551	249	319	182	731	9,669
Total	18,146	21,121	69,111	76,404	12,266	13,855	16,586	16,470	8,832	31,386	284,177

TABLE 18. MOTOR CYCLES ON REGISTER BY MAKE OF VEHICLE:  
STATE/TERRITORY OF REGISTRATION, 30 SEPTEMBER 1991

Make of vehicle	State of registration								Australia
	NSW	Vic.	Qld	SA	WA	Tas.	NT	ACT	
B.M.W.	3,023	2,293	1,690	788	1,017	313	190	339	9,653
Ducati	1,178	778	782	408	653	102	40	101	4,042
Harley Davidson	3,884	3,402	2,849	1,324	2,487	478	350	237	15,011
Honda	22,221	22,281	19,698	9,872	11,503	1,660	1,278	1,385	89,898
Kawasaki	9,262	10,476	7,197	3,753	4,542	807	578	797	37,412
Suzuki	13,362	11,216	10,159	5,220	6,833	1,142	529	896	49,357
Triumph	627	819	660	351	874	80	58	57	3,526
Yamaha	14,325	16,541	13,926	8,756	8,352	1,403	1,173	852	65,328
Not stated	3	2	1	229	12	28	—	6	281
Other	1,725	2,672	1,699	744	2,388	148	141	152	9,669
Total	69,610	70,480	58,661	31,445	38,661	6,161	4,337	4,822	284,177

TABLE 19. PASSENGER VEHICLES ON REGISTER BY MAKE OF VEHICLE AND TARE WEIGHT:  
AUSTRALIA, 30 SEPTEMBER 1991

Make of vehicle	Tare (kg)						Total
	900 and under	901 to 1100	1101 to 1300	1301 to 1500	Greater than 1500	Not stated (b)	
<b>Australian Resident Manufacturers(a) —</b>							
Ford	199,147	242,060	268,660	626,337	134,534	346,337	1,817,075
Holden	103,220	278,806	687,057	311,419	20,201	360,823	1,761,526
Mitsubishi	33,343	98,368	289,860	27,963	21,932	116,777	588,243
Nissan (incl Datsun)	128,877	258,812	140,141	49,251	39,825	157,765	774,671
Toyota	158,115	420,116	216,283	61,650	90,787	214,359	1,161,310
<b>Major Imported Makes —</b>							
B.M.W.	491	13,207	13,950	10,295	4,260	7,491	49,694
Chrysler	14,184	70,593	54,805	38,741	7,429	57,541	243,293
Daihatsu	43,943	3,717	2,394	1,593	523	8,329	60,499
Honda	69,570	49,049	18,138	4,926	365	23,872	165,920
Hyundai	271	24,610	3,501	51	37	3,988	32,458
Jaguar	15	30	552	1,718	16,931	4,594	23,840
Leyland	13,060	1,773	2,058	237	1,616	7,405	26,149
Mazda	114,612	138,826	61,531	11,175	1,332	75,457	402,933
Mercedes Benz	35	248	6,060	29,576	31,364	11,124	78,407
Morris	18,320	2,570	115	34	13	7,621	28,673
Peugeot	241	2,748	17,623	2,694	241	4,425	27,972
Renault	6,937	12,000	1,547	115	40	5,441	26,080
Subaru	9,728	50,023	12,930	1,284	642	18,161	92,768
Suzuki	17,184	8,571	280	132	15	6,213	32,395
Volkswagen	50,151	7,800	1,581	2,344	618	19,407	81,901
Volvo	75	879	45,008	31,637	763	14,570	92,932
Not stated	102	87	80	79	21	5,443	5,812
Other	37,931	62,488	51,986	27,805	50,545	48,147	278,902
<b>Total</b>	<b>1,019,552</b>	<b>1,747,381</b>	<b>1,896,140</b>	<b>1,241,056</b>	<b>424,034</b>	<b>1,525,290</b>	<b>7,853,453</b>

(a) See paragraph 12 (page 21) of Explanatory Notes for a definition of Australian Resident Manufacturers. (b) Not Stated includes some Passenger Vehicles registered in Queensland, and all Passenger Vehicles registered in South Australia, Tasmania and the Northern Territory as Tare is not recorded by the relevant motor vehicle registries.

TABLE 20. LIGHT COMMERCIAL VEHICLES ON REGISTER BY MAKE OF VEHICLE AND TARE WEIGHT:  
AUSTRALIA, 30 SEPTEMBER 1991

Make of vehicle	Tare (kg)						Total
	900 and under	901 to 1100	1101 to 1300	1301 to 1500	Greater than 1500	Not stated (a)	
Chrysler	26	874	2,556	7,261	392	1,172	12,281
Daihatsu	11,059	1,384	4,787	4,683	2,804	4,396	29,113
Dodge	20	30	891	3,071	2,374	943	7,329
Ford	10,649	6,398	43,125	137,265	42,274	32,368	272,079
Holden	4,559	14,588	58,616	139,916	20,366	35,131	273,176
Land Rover	63	158	1,412	7,708	10,130	4,700	24,171
Leyland	5,951	52	31	410	1,181	1,656	9,281
Mazda	6,903	7,463	24,735	16,699	3,567	8,435	67,802
Mitsubishi	194	18,000	38,962	11,740	3,831	9,445	82,172
Nissan (incl Datsun)	9,446	13,074	41,243	36,259	35,180	25,503	160,705
Subaru	5,805	14,521	81	18	33	2,450	22,908
Suzuki	53,370	2,092	124	67	13	7,028	62,694
Toyota	6,973	25,052	94,574	97,155	108,808	59,233	391,795
Volkswagen	244	2,171	11,325	2,410	292	4,206	20,648
Not stated	24	13	26	40	32	23	158
Other	8,951	5,174	9,301	5,562	9,078	5,329	43,395
<b>Total</b>	<b>124,237</b>	<b>111,044</b>	<b>331,789</b>	<b>470,264</b>	<b>240,355</b>	<b>202,018</b>	<b>1,479,707</b>

(a) Not Stated includes some Light Commercial Vehicles registered in Queensland and all Light Commercial Vehicles registered in South Australia, Tasmania and the Northern Territory as Tare is not recorded by the relevant motor vehicle registries.

TABLE 21. RIGID TRUCKS ON REGISTER BY MAKE OF VEHICLE AND GROSS VEHICLE MASS:  
AUSTRALIA, 30 SEPTEMBER 1991

Make of vehicle	GVM (tonnes)							Total
	Over 3.5 to 8	Over 8 to 12	Over 12 to 16	Over 16 to 20	Over 20 to 25	Greater than 25	Not stated	
Bedford	11,166	10,454	3,675	439	210	16	75	26,035
Daihatsu	16,121	13	4	1	1	7	289	16,436
Dodge	9,074	6,283	1,832	409	128	13	76	17,815
Ford	25,251	7,496	5,903	554	3,860	266	763	44,093
Hino	1,038	6,871	6,766	91	781	32	296	15,875
International	9,697	14,235	14,870	3,685	8,871	933	415	52,706
Isuzu	16,403	12,797	7,906	363	1,082	87	685	39,323
Leyland	516	1,101	2,187	303	862	42	30	5,041
Mazda	13,391	131	11	2	4	6	376	13,921
Mitsubishi	10,640	5,668	6,408	67	1,425	125	435	24,768
Nissan (incl Datsun)	4,715	1,390	1,010	159	1,162	215	319	8,970
Toyota	31,738	1,817	993	15	79	73	972	35,687
Volvo	8	27	636	317	3,814	769	53	5,624
Not stated	27	16	7	2	45	15	1,634	1,746
Other	5,754	4,294	3,711	1,439	6,853	1,830	1,164	25,045
Total	155,539	72,593	55,919	7,846	29,177	4,429	7,582	333,085

TABLE 22. ARTICULATED TRUCKS ON REGISTER BY MAKE OF VEHICLE AND GROSS VEHICLE MASS:  
AUSTRALIA, 30 SEPTEMBER 1991

Make of vehicle	GVM (tonnes)							Total
	18 and under	Over 18 to 24	Over 24 to 30	Over 30 to 34	Over 34 to 40	Greater than 40	Not stated	
Atkinson	324	142	299	7	91	81	205	1,149
Ford	1,272	594	1,188	74	256	516	924	4,824
International	2,728	1,345	1,676	222	526	729	1,343	8,569
Kenworth	1,793	945	1,813	113	472	1,016	1,346	7,498
Mack	796	860	1,460	51	445	1,035	943	5,590
Mercedes Benz	1,572	896	894	168	229	272	868	4,899
Nissan (incl Datsun)	304	239	210	34	99	124	161	1,171
Scania	713	614	632	73	121	421	767	3,341
Volvo	1,217	1,040	1,265	118	420	734	1,121	5,915
White	244	271	333	18	132	266	269	1,533
Not stated	—	—	—	3	—	—	292	295
Other	2,053	1,143	928	146	343	559	1,058	6,230
Total	13,016	8,089	10,698	1,027	3,134	5,753	9,297	51,014

**TABLE 23. BUSES ON REGISTER BY MAKE OF VEHICLE AND TARE WEIGHT:  
AUSTRALIA, 30 SEPTEMBER 1991**

Make of vehicle	Tare (kg)						Total
	1200 and under	Over 1200 to 1500	Over 1500 to 1800	Over 1800 to 5000	Greater than 5000	Not stated	
Bedford	4	9	13	240	3,039	546	3,851
Denning	2	1	3	9	718	56	789
Ford	31	216	128	91	286	114	866
Hino	1	1	—	673	1,382	174	2,231
Leyland	9	2	13	127	2,612	156	2,919
MAN	1	2	—	8	1,169	23	1,203
Mazda	29	82	3	2,312	2	234	2,662
Mercedes Benz	5	—	—	35	3,380	163	3,583
Nissan (incl Datsun)	194	1,913	882	750	161	699	4,599
Toyota	123	1,571	2,887	10,805	29	2,543	17,958
Volkswagen	196	1,917	13	2	—	101	2,229
Volvo	2	1	—	1	1,993	131	2,128
Not stated	—	—	—	16	192	1	209
Other	93	382	64	606	3,618	545	5,308
<b>Total</b>	<b>690</b>	<b>6,097</b>	<b>4,006</b>	<b>15,675</b>	<b>18,581</b>	<b>5,486</b>	<b>50,535</b>

**TABLE 24. MOTOR VEHICLES ON REGISTER BY TYPE OF VEHICLE AND FUEL TYPE:  
AUSTRALIA, 30 SEPTEMBER 1991**

Type of vehicle	Fuel type						Total
	Petrol			Diesel or distillate	LPG or dual fuel	Other or not stated (a)	
	Leaded	Unleaded	Total				
Passenger vehicles	5,288,464	2,342,595	7,631,059	101,580	29,087	91,727	7,853,453
Light commercial vehicles	866,521	295,850	1,162,371	228,540	9,028	79,768	1,479,707
Rigid trucks	103,462	6,179	109,641	198,228	2,078	23,138	333,085
Articulated trucks	3,082	406	3,488	46,015	35	1,476	51,014
Other trucks	29,843	4,891	34,734	8,541	467	3,205	46,947
Buses	14,240	3,895	18,135	30,175	139	2,086	50,535
Motor cycles	203,392	80,574	283,966	—	—	211	284,177
<b>Total</b>	<b>6,509,004</b>	<b>2,734,390</b>	<b>9,243,394</b>	<b>613,079</b>	<b>40,834</b>	<b>201,611</b>	<b>10,098,918</b>

(a) Other or not stated includes vehicles where the fuel type is not known.



## EXPLANATORY NOTES

### NOTE:

The statistics in this publication are based on new processing procedures which allow more accurate classification of vehicles. As a result, 1991 data processed under this new system, are not strictly comparable with previous census data. Particular attention, therefore, should be paid to the explanatory notes and the table footnotes.

### Introduction

2. This publication contains statistics relating to vehicles which were 'on register' at 30 September, 1991 with a motor vehicle registration authority. Similar statistics have been published periodically since the first motor vehicle census was conducted in 1971.

3. For census purposes, vehicles on register at 30 September 1991 have been defined as those vehicles for which registration was effective for a period including 30 September 1991, the registration fees being paid either in advance, on that date, or retrospectively. Since registration authorities can process renewals of registrations some time after the due date, registration transactions were analysed for about one month after 30 September 1991 to ensure that most retrospective transactions were taken into account.

### Scope and Coverage

4. Motor vehicle registration statistics are derived from data made available by the various State and Territory motor vehicle registration authorities and reflect the information as recorded in registration documents.

5. The statistics include vehicles with diplomatic and consular plates and State and Commonwealth Government owned vehicles other than those belonging to the defence services. Commonwealth Government vehicles were excluded from motor vehicle censuses to 1982 inclusive.

6. The motor vehicle census covers all vehicles registered for normal use on public roads which were on register at 30 September 1991. It should be noted that vehicles such as tractors (particularly the agricultural types), plant and equipment and motor vehicles used solely on farms, in mines, etc. and not used on public roads are not required to be registered and are, therefore, excluded from the statistics. Certain vehicles which do use public roads but are exempt from normal registration requirements, e.g. fire engines in certain States and Territories, are also excluded from these statistics. The extent to which they are excluded varies between the States and Territories.

### Classifications

7. The classification of vehicles in this publication generally reflects the information as recorded on motor registry files. Vehicles are classified by type of vehicle, make, weight, fuel type and year of manufacture.

8. As the registration documents used by the various motor vehicle registry systems are not uniform, either in the data that are available or in the definition of common data items, care must be taken when making comparisons between data from the different systems. For example, it

is possible for identical vehicles to be described differently in different States and Territories, viz. a four wheel drive vehicle may be registered as a car, station wagon, panel van, rigid truck or bus.

Similarly a hatchback vehicle may be registered as either a car or station wagon. It is for this reason cars have been amalgamated with station wagons and forward control passenger vehicles while utilities have been amalgamated with panel vans, cab chassis' and goods carrying forward control vehicles in census results.

9. Both the motor registries and the ABS have, in recent years, taken considerable steps to improve data quality through the introduction of improved processing and classification systems and the incorporation of additional edits, based on make and model data derived from the new Vehicle Identification Number (VIN). While these and other similar initiatives have considerably improved data accuracy, care still needs to be taken when comparing data from the different State registry systems.

10. The introduction of VINs by the motor vehicle authorities from July 1990 onwards has facilitated the classification of vehicles to particular categories. Vehicles such as minibuses which, in the old system, had been classified to cars and station wagons in some States but to buses in other States are now consistently classified (by ABS) to passenger vehicles. Similarly, in the old system utilities and cab chassis vehicles, which were sometimes classified to small trucks are now consistently classified to light commercial vehicles. In addition, duplicate records and out of scope vehicles can now be more accurately identified and, therefore, excluded from the statistics.

11. The ABS has also incorporated the third Australian Design Rule (3ADR) body coding classification categories for light and heavy commercial vehicles into its revised vehicle classification system. Under the new classification rules, only vehicles with a Gross Vehicle Mass (GVM) greater than 3.5 tonnes are classified as rigid or articulated trucks. Vehicles with a GVM of less than or equal to 3.5 tonnes are now coded as light commercial vehicles (utilities, panel vans, forward control vehicles etc.). In previous censuses any vehicle recorded by a motor registry as a truck was classified accordingly. As a result of this classification change, however, there has been a dramatic increase in the number of light commercial vehicles in some States, with corresponding falls in rigid trucks of 4 tonnes or less.

### Description of terms

12. *Australian Resident Manufacturers* of passenger vehicles are vehicle manufacturers with manufacturing facilities located in Australia. Counts of vehicles for these manufacturers include any vehicles imported by them.

13. The vehicle *tare weight* is the unladen weight of the vehicle. Examples of vehicles that would be included in various tare weight categories are a Holden Barina in the 900 kilograms and under category; a Holden Nova in the 901 to 1100 kilograms category; and a Holden Commodore in the 1301 to 1500 kilograms category.

14. *Gross Vehicle Mass (GVM)* refers to any goods vehicle, e.g. rigid truck, and is calculated as the tare weight plus the maximum carrying capacity of the vehicle.

15. *Gross Combination Mass (GCM)* refers to any vehicle operated in combination (e.g. a prime mover/trailer combination) and represents the maximum permitted aggregate of the combined tare weight and the load borne by the combination.

16. *Passenger vehicles.* Vehicles constructed primarily for the carriage of less than 10 passengers (including the driver). Included are cars, station wagons, 4WD passenger vehicles and forward control passenger vehicles.

17. *Light commercial vehicles.* Vehicles constructed primarily for the carriage of goods and not exceeding 3.5 tonnes gross vehicle mass (GVM). Included are utilities, panel vans, cab chassis' and forward control load carrying vehicles (whether 4WD or not).

18. *Heavy commercial vehicles.*

*Rigid trucks.* Vehicles constructed primarily for load carrying with a gross vehicle mass (GVM) exceeding 3.5 tonnes. Included are normal rigid trucks with a tow bar, draw bar or other non-articulated coupling on the rear for use with a trailer or dolly.

*Articulated trucks.* Vehicles constructed primarily for load carrying consisting of a prime mover having no significant load carrying area, but with a turn table device which can be linked to a trailer. With or without a trailer the gross combination mass (GCM) will exceed 3.5 tonnes.

19. *Other trucks.* Includes specialist vehicles such as ambulances or mobile cranes or vehicles fitted with special purpose equipment and having no goods carrying capacity, e.g. cranes, cherry pickers, etc.

20. *Omnibuses.* Includes all passenger vehicles having more than nine seats, including the driver.

#### Unpublished data

21. Statistics contained in this publication are a small sample of what is currently available. Detailed statistics including the number of vehicles on register by make, year of manufacture and postcode are available on request and can be supplied on most media, including paper, microfiche, magnetic tape and floppy disk. It is expected that information by Statistical Local Area (SLA) code will become available in late 1992 so that motor vehicle census data may be directly related to the 1991 population census data.

#### Related publications

22. Users may also wish to refer to the following publications containing statistics of new motor vehicle registrations and motor vehicle usage:

*Registrations of New Motor Vehicles, Australia, Preliminary (9301.0)* — issued monthly

*Motor Vehicle Registrations, Australia (9303.0)* — issued monthly

*Survey of Motor Vehicle Use, Australia (9208.0)* — issued triennially (to be released this year for the survey conducted as at 30 September 1991).

23. Publications 9301.0 and 9303.0 also contain annual statistics of vehicles on register at 30 June.

24. Current publications produced by the ABS are listed in the *Catalogue of Publications, Australia (1101.0)*. The ABS also issues on Tuesdays and Fridays, a *Publications Advice (1105.0)* which lists publications to be released in the next few days. The Catalogue and Publications Advice are available from any ABS office.

#### Symbols and other usages

- nil or rounded to zero
- break in continuity of series

25. Where figures have been rounded, discrepancies may occur between the sums of the component items and totals.